

*Building Trust.
Delivering Values.*



RATHNA
RESIDENCY



BUILDING TRUST EVERY STEP OF THE WAY

A brief history of Rathna Group, its enterprises, their growth and their values.

What started as a finance operation back in 1960 now has manifested into Rathna Group with its presence in distribution of pharmaceuticals, electronics and hospitality industry under different banners. We have consolidated and corporatized our pharma and electronics distribution and succeeded in being a onestop shop for all products.





RATHNA RESIDENCY

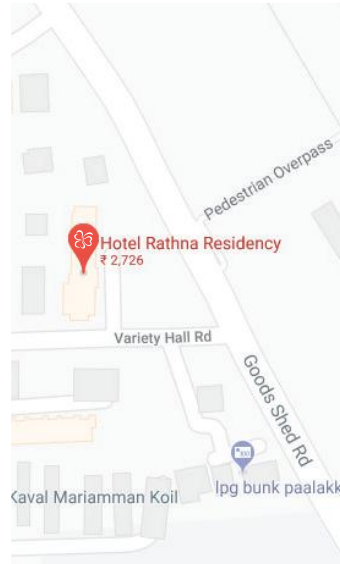
Rathna Residency is a chain of hotels across the state covering all the bustling two tier towns of Tamil Nadu. The journey began in 2001 by setting up a business class hotel in Madurai. Today, all the hotels under the banner strive to ensure a satisfied clientele at affordable rates. Our topmost priority is to provide the guests an enriching experience throughout their stay. We boast a strong infrastructure, suited for business and leisure travellers alike, at all our properties. Further, we serve quality gourmet with standardised menus, adding regional delicacies.

Our guests enjoy state of the art amenities which have been crafted with utmost care to suit their requirements.

STAR VALUE

- The Star Value of the properties are its prime locations. All six hotels have been centrally located within few kilometre distances from railway stations and bus stands. They are easily accessible from the commercial centres.
- We provide top class services, clean bed and bath, varied banquet options and quality food at affordable rates.





48 ROOMS

- 42 Deluxe rooms
- 6 Super Deluxe rooms

AMENITIES

- Ample Parking Space
- Conference and Board rooms
- Safety lockers
- Mini Fridge
- Rooftop Restaurant
- Vanity set
- Coffee kit
- Comfortable Duvets
- Round the clock room service
- 24 hours hot water

BANQUET

- Ruby Hall (300 pax)
- Amethyst Hall (150 pax)
- Pinnacle Hall (100 pax)
- Jade Board Room (12 pax)
- Sapphire Board Room (12 pax)

RELISH

- Fusion, Multicuisine Restaurant (84 covers)
- Palms, Rooftop Restaurant (64 covers)

BAR

- Black and White Bar (54 covers)

Description of Hotel:

We have been providing top class services to Coimbatoreans for the past 12 years. Apart from providing a well structured bed and breakfast with our well appointed rooms, we excel in providing round the year banquet services with tailor made menus to suit everyone's needs. Our rooftop, Palms is Coimbatore's favorite rooftop, serving authentic cuisine with great views.

TRANSPORT LINKS:

- Coimbatore Town/Central Bus Stand: 2kms
- Coimbatore Central Railway Station: 500 mtrs
- Coimbatore International Airport: 12kms



355, Variety Hall Road,
Coimbatore-641001
Booking : 97509-64441; 0422-4225666



01



02



03



04



05



06



07



08



09

01.Exterior View 02.Palms Restaurant 03.Ruby Hall 04. Reception / Front Office 05.Twin Sharing Room 06.Deluxe Bed Room
07. Amethyst Hall 08.Fusion Restaurant 09.Jade Hall



Description of Hotel:

This plush facility is a newbie In town. A one of its kind venture in the city of erode. The party hall here is one of the biggest in the city,well suited for all your party and festive needs.



TRANSPORT LINKS:

- Bus Stand: 1.1kms
- Railway Station: 2kms



No.5 & 7 VCTV Rd, 3rd Street
Sathy Main Rd, Erode
Booking : 90034-67444, 90034-72444

39 ROOMS

- 26 standard rooms
- 12 Deluxe rooms
- 1 suite room.

AMENITIES

- Ample parking space
- Conference and Board rooms
- Safety lockers
- Mini Fridge
- Coffee kit
- Kettle on request
- Vanity set
- Comfortable duvets
- Round the clock room service
- 24 hrs hot water

BANQUET

- Ruby Hall (400 pax)
- Amethyst Hall (75 pax)
- Pinnacle Hall (75 pax)

RELISH

Fusion, Multicuisine Restaurant
(72 covers)



01



02



03



04



05



06



07



08



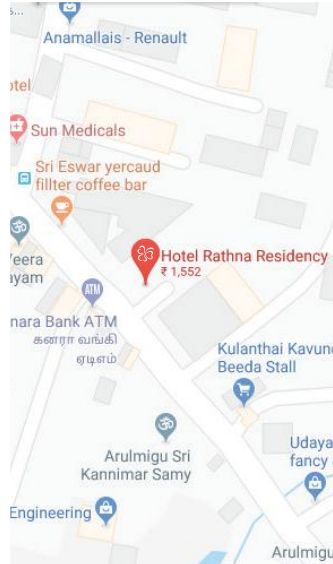
09

01.Exterior View 02.Ruby Dining Hall 03.Ruby Hall 04.Suite Room Sitting Area 05.Twin Room 06.Deluxe Bed Room
07. Restaurant /All You Can Eat & Drink Breakfast Buffet 08.Toilet 09.Pinnacle Hall



Description of Hotel:

Rathna Residency Salem, is a perfect choice for your next family/business trip. Situated at the prime locality of the Salem downtown, we provide unparalleled service at affordable rates. We have 4 different banquet halls to suit the varied needs of our wide clientele. This facility prides itself with a mammoth 66 well appointed rooms to cater to our client needs.



TRANSPORT LINKS:

- Bus Stand: 750 mtrs
- Railway Station: 1.5 kms



17/14, E Block Suramangalam Main road, 3 roads, Salem-09
 Booking : 0427-2446744, 7373044476

66 ROOMS

- 24 Economy rooms
- 33 Standard rooms
- 3 Super Deluxe rooms
- 6 suite rooms

AMENITIES

- Ample Parking Space
- Conference and Board rooms
- Vanity set
- Coffee kit
- Comfortable Duvets
- Round the clock room service
- 24 hours hot water
- Mini Fridge
- Safety Locker

BANQUET

- Ruby Hall (200 pax)
- Emerald Conference Hall (40 pax)
- Amethyst Conference Hall (10 pax)
- Sapphire Hall (250 pax)

RELISH

- Fusion, Multi cuisine Restaurant (50 covers)

BAR

- B n W Bar (50 covers)



01



03



04



02



05



06



07

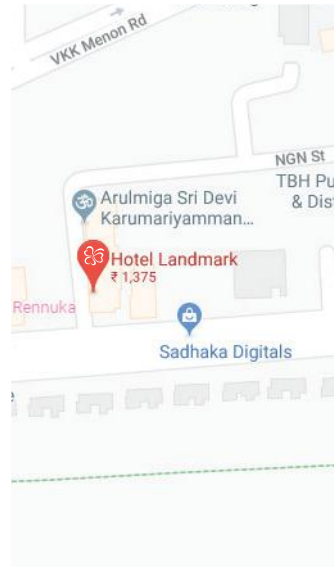


08



09

01.Exterior View 02.Restaurant 03.Ruby Hall 04.Front Office/ Reception Area 05.Twin Room 06. Deluxe Bed Room
07.Restaurant /All You Can Eat & Drink Breakfast Buffet 08.Suite Room 09.Amethyst Hall



Description of Hotel:

Landmark's location at stone throw away from the central bus stand and the commercial hub of Coimbatore, Gandhipuram is the biggest advantage. We provide star category services to our guests and our chefs provide a taste tingling array of gourmet. It also houses 'Attari' the newest rooftop diner in town, with a canopied ambience and soothing lights.

TRANSPORT LINKS:

- Town/Central Bus Stand: 250mtrs
- Central Railway Station: 4kms
- International Airport: 8kms



355/1, Bharatiar Road, Near
Siddhapudur, Gandhipuram,
Coimbatore-641044
Booking : 73730-44411; 73730-44412

50 ROOMS

- 20 Economy rooms
- 24 Standard rooms
- 2 Deluxe rooms
- 4 suite rooms.

AMENITIES

- Ample parking space
- Conference and Board rooms
- Safety lockers
- Mini Fridge
- Rooftop Restaurant
- Vanity set
- Coffee kit
- Comfortable Duvets
- Round the clock room service
- 24 hours hot water

BANQUET

- Ruby Hall (150 pax)
- Emerald Hall (25 pax)
- Sapphire Hall (25 pax)

RELISH

- Fusion, Multicuisine Restaurant (44 covers)
- Attari Roof Top Dinner (55 covers)

BAR

- The L2 Bar- Landmark Lounge (70 covers)



01



03



04



02



05



06



07



08



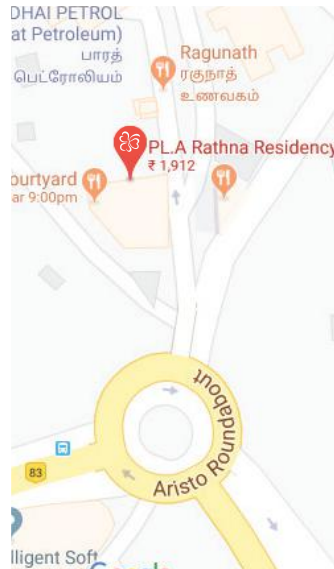
09

01.Exterior View 02.Reception 03.Sapphire Hall 04.Attari Roof Top Diner 05.Deluxe Bed Room
06.Twin Room 07.Restaurant /All You Can Eat & Drink Breakfast Buffet 08.L2 Bar 09.Ruby Hall



Description of Hotel:

Joining hands with the trade stalwarts of Trichy- PL.A. Group, PL.A. Rathna Residency was established. It is a business class hotel at a stone throw distance away from the city railway station in the heart of the malaikottai town. One of our most sought after facility, primely because of its location and great biz-class comforts for its valued clientele.



TRANSPORT LINKS:

- Bus Stand: 500mtrs
- Railway Station: 700mtrs
- Airport: 6kms



No.4, Dindigul Road, Opp KPN Travels,
Central Bus Stand, Trichy - 620001
Booking : 0431 2405500; 7373780000

58 ROOMS

- 2 Economy Rooms
- 23 Standard rooms
- 30 Deluxe rooms
- 2 Triple sharing Rooms.
- 1 suite room

AMENITIES

- Ample Parking Space
- Conference and Board rooms
- Safety lockers
- Mini Fridge
- Vanity set
- Coffee kit
- Comfortable Duvets
- Round the clock room service
- 24 hours hot water

BANQUET

- Ruby Party Hall (250 pax)
- Amethyst Conference Hall (50 pax)
- Pinnacle Conference Hall (20 pax)
- Palms Conference Hall (80pax)

RELISH

- Chettinad Courtyard, Multi cuisine Restaurant (110 covers)
- Fusion Coffee Lounge (25 covers)

BAR

- B n W Bar (62 covers)



01



03



04



02



05



06



07

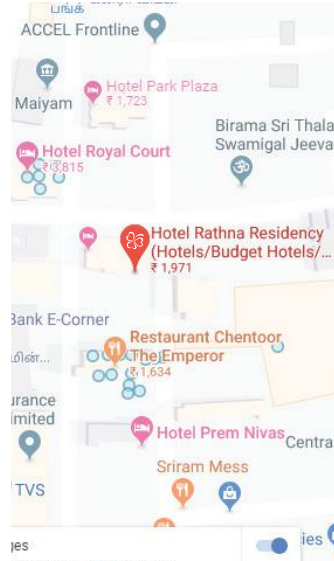


08



09

01.Exterior View 02.B N W Bar Room 03.Ruby Hall 04.Reception/ Front Office 05.Triple Bed Room 06.Deluxe Bed Room
07.Restaurant /All You Can Eat & Drink Breakfast Buffet 08.Bar 09.Twin Room



Description of Hotel:

Rathna Residency Madurai, is serving the temple city for the past fifteen years. This facility is at the heart of the town and provides luxury and comfort at affordable rates. Easily accessible from all temples and transport hubs, we pride in being the oldest players in the city with a loyal clientele.

TRANSPORT LINKS:

- Bus Stand: 800mtrs
- Railway Station: 400mtrs
- Airport: 13kms
- Meenakshi Amman Temple: 500mtrs



No.109,West Perumal Maistry Street,
Madurai - 625001
Booking : 0452 4374444; 9944093555

43 ROOMS

- 18 Economy Rooms
- 20 Standard rooms
- 5 Deluxe rooms

AMENITIES

- Ample Parking Space
- Conference and Board rooms
- Mini Fridge
- Free Wifi
- Vanity set
- Coffee kit
- Comfortable Duvets
- Round the clock room service
- 24 hours hot water

BANQUET

- Chettinad Halll (150pax)
- Aachi Arangam (125pax)
- Heritage Conference Hall (20pax)
- Business Room (10pax)

RELISH

- Sangam, Multi cuisine Restaurant (38 covers)

BAR

- Samudra Bar (58 covers)



01



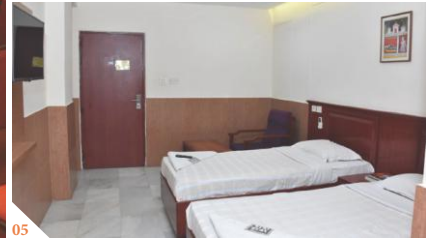
03



04



02



05



06



07



08



09

01.Exterior View 02.Restaurant 03.Ruby Hall 04.Reception / Front Office 05.Twin Room 06.Deluxe Bed Room
07.Restaurant /All You Can Eat & Drink Breakfast Buffet 08.Entrance 09.Pinnacle



CHAIRMAN'S MESSAGE:

We at Rathna Residency promise elegance, supreme comfort and magnificent locations reflecting indigenous customs and culture. Each hotel is designed to provide a standardized experience to our guests. We are the perfect destination to enjoy your bizcation and we guarantee great stays. Besides, our banqueting facilities are designed with spacious halls and specially crafted menus to meet your leisure parties and business conferences alike. Welcome to Rathna!

